

Welcome Session

Changmin Shi

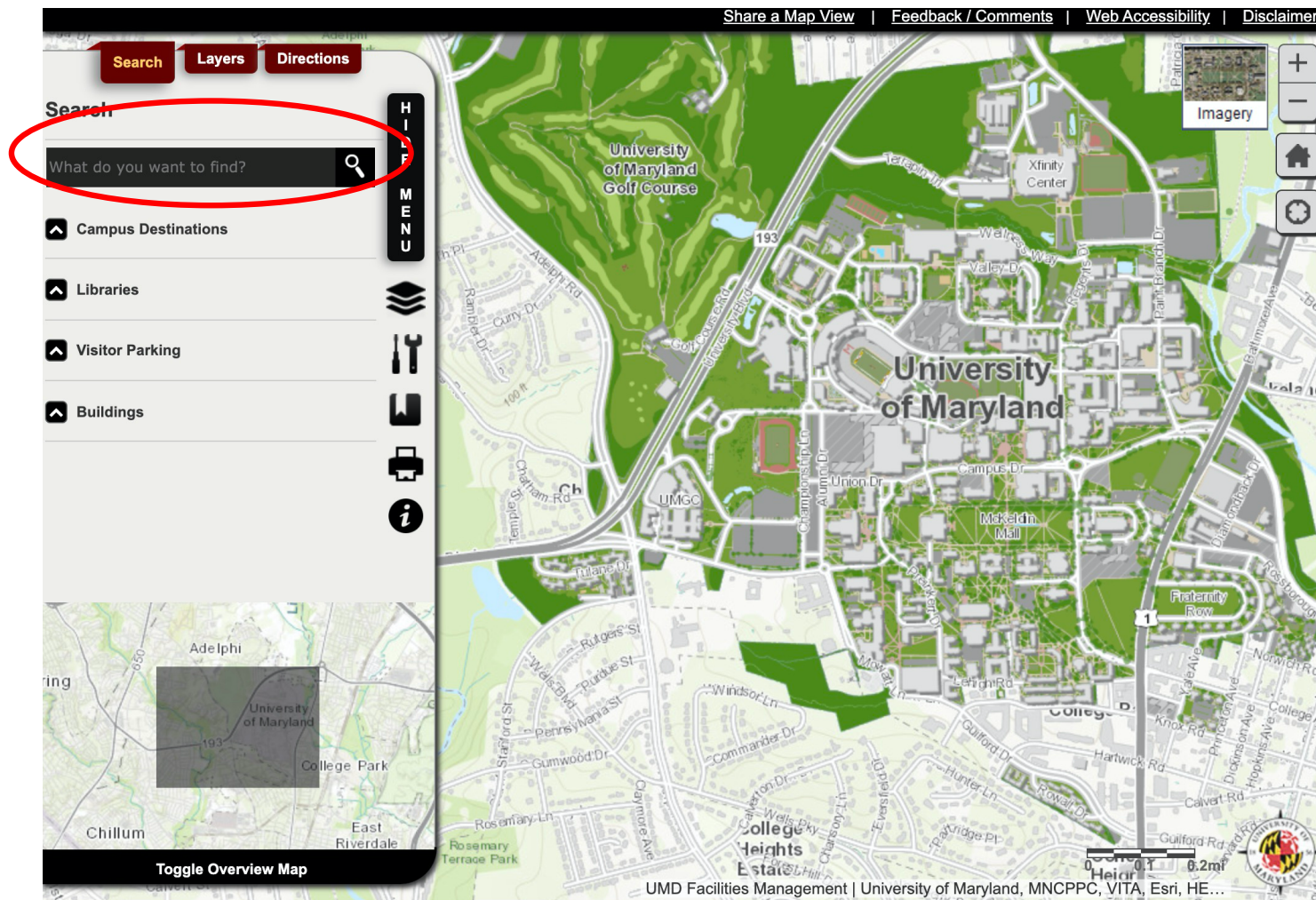
MSGs

Outline

- **Familiar with Campus**
 - Map
 - University ID card and Directory ID setup
 - Transcript Submission
 - Transportation
 - UMD Business Office-Benefits
 - Registration for Classes
 - Financial Service
 - Safety Training
 - Stamp Student Union/health center/recreational center
- **Scientific Tools Resource**
 - UMD IT
 - Virtual Computer Lab
- **Off-Campus Mask Distribution**
- **Explore DC area**

Campus Map-1

<https://maps.umd.edu/map/>



Campus Map-2

<https://terpnav.umd.edu/>

Route Layers Search Tools

Start Location:
Engineering Laboratory Building

Destination Location:
Chemical and Nuclear Engineering

Find Route Clear All

Route Loaded:
(190.0 yards)

Routing Options

No Stairs

Distance units: yards

Route Layers Search Tools

- Bikes
- Food
- Safety
- Staff Parking
- Student Parking
- Visitors

University ID card

- Get from: First Floor, Mitchell Building, Monday - Friday, 8am - 5pm.
- Replacement: \$20 charge
- Report stolen or lost of ID card:
<https://registrar.umd.edu/current/Policies/id-cards.html>

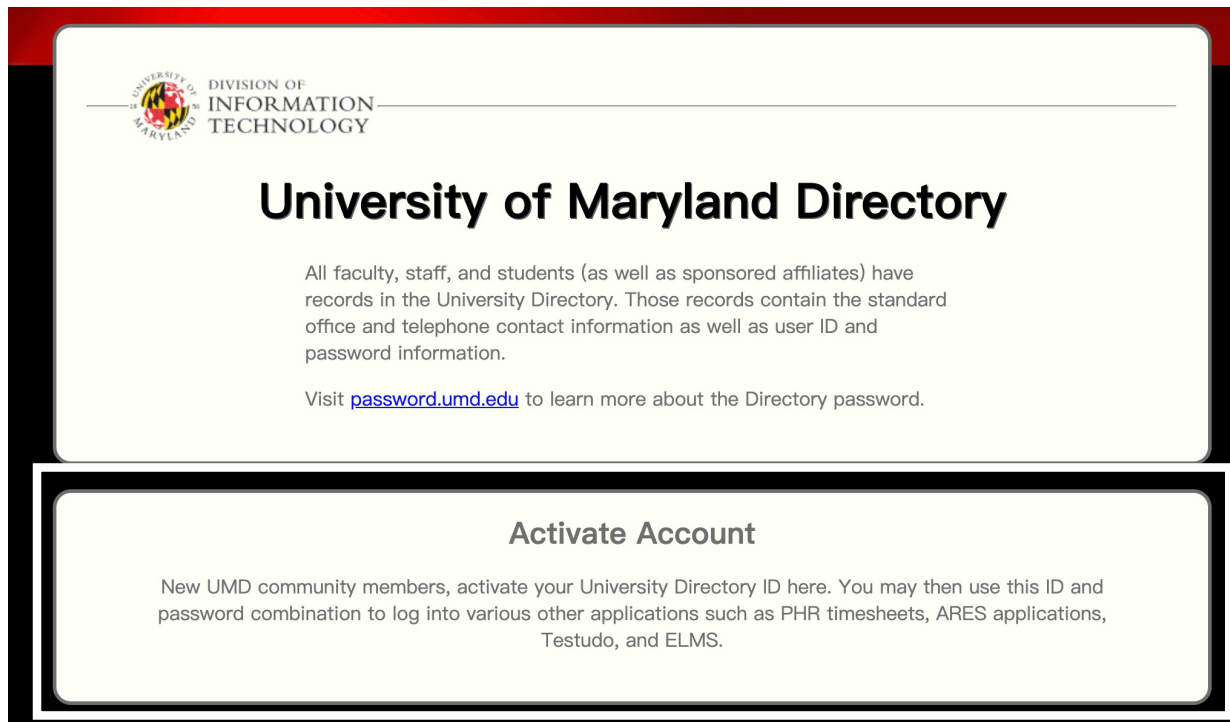
Access to Programs and Services


Students and employees have access to University programs and services as defined by University policies and procedures. Students may use their ID cards to:

- Obtain transcripts, verifications, schedule printouts, graduation tickets,
- Access campus buildings such as residence halls and some classroom buildings,
- Access library and information services and as a photo copy card,
- Use your Dining Services meal plan points at campus dining halls and area eateries,
- Serve as your Terrapin Express debit card for on campus eateries and retailers,
- Obtain athletic tickets (using the barcode on the reverse of your card),
- Access campus recreational facilities,
- Gain admission to campus sponsored events,
- Ride the University's Shuttle bus,
- Receive discounts at some area vendors.

Directory ID Setup

<https://identity.umd.edu/>



 DIVISION OF
INFORMATION
TECHNOLOGY

University of Maryland Directory

All faculty, staff, and students (as well as sponsored affiliates) have records in the University Directory. Those records contain the standard office and telephone contact information as well as user ID and password information.

Visit password.umd.edu to learn more about the Directory password.

Activate Account

New UMD community members, activate your University Directory ID here. You may then use this ID and password combination to log into various other applications such as PHR timesheets, ARES applications, Testudo, and ELMS.

cshi0830@terpmail.umd.edu

Email setup

<https://cgi.oit.umd.edu/cgi-bin/account/activation.cgi>

Directory ID: cshi0830

Undergraduate/Master Transcript Submission

<https://gradschool.umd.edu/node/3242>

If I enroll, where do I send my official transcripts?

Decision and Enrollment

If I enroll, where do I send my official transcripts?

Transcripts can be mailed to:

University of Maryland
Enrollment Service Operations
Application for Graduate Admission
Room 0130 Mitchell Building
College Park, Maryland 20742

For the expedited submission of official transcripts, students should bring official/sealed envelopes in person to the Graduate front desk which is located in:

University of Maryland
The Graduate School
2123 Lee Building
7809 Regents Drive
College Park, Maryland 20742

CONTACT

INFORMATION

**The Graduate School,
University of Maryland**

2123 Lee Building
7809 Regents Drive
College Park, MD 20742
301-405-3644
gradschool@umd.edu

Transportation

<https://dots.umd.edu/>

- Parking permit (always has a discount for graduate students)
- UM shuttle bus
- Internship
- APP: Nextbus (rout, time and etc.)
- UMPD contact numbers:
 - Emergency: 911 or (301) 405-3333
 - Non-Emergency: #3333 or (301) 405-3555
- Nite Ride
 - (301) 314-NITE (6483)
- Campus Escort/Late Night Vehicle Assist
 - (301) 405-3555
- Motorist Assist (weekdays)
 - (301) 314-4227

MetroRail

<https://wmata.com/schedules/maps/>

UMD Business Office-Benefits

Ruth Yun (ryun@umd.edu) / Justin Teng (jteng5@umd.edu)

- Getting physical keys/electronic access to buildings on campus
- Payment, tax, benefits

Rachel Katz (rdkatz@umd.edu)-- director

All,

We have asked Doug Waterman to deliver packages once a week to the **business office**. He will deliver them each Monday. We will check in all the packages on Monday and then the remainder of the week we will have a schedule for package pick-up. We ask that you please follow this schedule as it is important that we maintain as much social distancing as possible.

The schedule is as follows:

Tuesday and Thursdays - 1-3PM.

Wednesday and Friday - 10AM-12Noon.

Please call the phone number listed on the **office door** or the designated person listed below so that you can gain access to the **office**. We are asking that you follow these guidelines as we want to maintain social distancing as much as possible.

The following is a listing of days that the staff are on campus and in the **business office**:

Monday - Christina ext- 42693

Tuesday- Jenna - ext - 58932

Wednesday - Sang ext 58932

Thursday- Novy- ext 58207

Friday- Ruth - ext 51969,


Please help us and be mindful of this schedule.


Thank you!


Rachel

Registration for Classes-1

<https://testudo.umd.edu/>


 **Schedule Of Classes**

 **Final Exams**



**The following interactive web services are available
Mon - Sat, 7:30am - 11:00pm & Sun, 5:30pm - 11:00pm.**

<ul style="list-style-type: none"> Appointment and Registration Status Change Address / E-mail Degree Audit Grant/Remove Parent Access <li style="border: 1px solid red; padding: 2px;">Registration (Drop/Add) 	<ul style="list-style-type: none"> Summer & Winter Term Payment Calculator Student ID Barcode Student Schedule Unofficial Transcript Waitlist Check-In
--	---



The following interactive web services are available 24 hours

<ul style="list-style-type: none"> Deactivate ID Card Enrollment Certification Request & Status GPA Calculator <li style="border: 1px solid red; padding: 2px;">Grades 	<ul style="list-style-type: none"> Graduation Application & Diploma Status Schedule of Classes Transcript Request & Status Venus - Schedule Builder
--	--

Registration for Classes-2

<https://app.testudo.umd.edu/soc/>

Schedule of classes

Department code: ENMA

ECON Economics	PSYC Psychology
EDCP Education Counseling and Personnel Services	RDEV Real Estate Development
EDHD Education, Human Development	RELS Religious Studies
EDHI Education Leadership, Higher Ed and International Ed	RUSS Russian
EDMS Measurement, Statistics, and Evaluation	SLAA Second Language Acquisition an
EDSP Education, Special	SLLC School of Languages, Literatures
EDUC Education	SMLP Southern Management Leadersh
ENAE Engineering, Aerospace	SOCY Sociology
ENCE Engineering, Civil	SPAN Spanish
ENCH Engineering, Chemical	SPHL Public Health
ENCO Engineering, Cooperative Education	STAT Statistics and Probability
ENEB Embedded Systems & Internet of Things	SURV Survey Methodology
ENEE Electrical & Computer Engineering	TDPS Theatre, Dance and Performance
ENES Engineering Science	THET Theatre
ENFP Engineering, Fire Protection	TLPL Teaching and Learning, Policy an
ENGL English	TLTC Teaching and Learning Transform
ENMA Engineering, Materials	UMEI Maryland English Institute
ENME Engineering, Mechanical	UNIV University Courses
ENPM Engineering, Professional Masters	URSP Urban Studies and Planning
ENRE Reliability Engineering	USLT Latina/o Studies
ENSE Systems Engineering	VMSC Veterinary Medical Sciences
ENSP Environmental Science and Policy	WMST Women's Studies
ENST Environmental Science and Technology	
ENTM Entomology	
ENTS Telecommunications	

Registration for Classes-3

ENMA680 Determination of Structure, Chemical Composition and Defects in Materials

(Perm Req)

Credits: 3 Grad Meth: Reg, Aud

Prerequisite: ENMA650.

Restriction: Permission of ENGR-Materials Science & Engineering department.

► Syllabus
Repository (1

COURSE NUMBERING SYSTEM

International student: at least 42 units/semester

Courses are designated as follows:

- 000-099: Non-credit courses
- 100-199: Primarily first-year courses (not acceptable for credit toward graduate degrees).
- 200-299: Primarily sophomore courses (not acceptable for credit toward graduate degrees).
- 300-399: Junior and senior courses (not acceptable for credit toward graduate degrees).
- 400-499: Junior and senior courses acceptable for credit toward some graduate degrees. The number of such credits is limited by policies of the Graduate School and by the graduate program.
- 500-599: Professional school courses (Dentistry, Law, Medicine) and post-baccalaureate courses not for graduate degree credit.
- 600-898: Courses restricted to graduate students (see above for exceptions).
- 799: Master's thesis credit.
- 899: Doctoral dissertation credit.

<https://academiccatalog.umd.edu/graduate/policies/registration-policies/#text>

Courses	Units per Credit Hour
000-399	2 *
400-499	4
500-599	5 *
600-897	6
Masters Research: 799	12
Pre-candidacy Doctoral Research: 898	18
Doctoral Dissertation Research 899	18

<https://www.registrar.umd.edu/current/registration/Full-Time%20Status.html#:~:text=Any%20student%20registered%20for%2012,classes>

Registration for Classes-4

- If you do not have a PhD advisor:
 - Email to Dr. Takeuchi first: takeuchi@umd.edu, after approval, then email Ms. Parker at: nparker1@umd.edu and cc-ed Dr. Takeuchi
- If you do have a PhD advisor:
 - Email to your advisor first:, after approval, then email Ms. Parker at: nparker1@umd.edu and cc-ed your advisor

Financial Service

<https://ares.umd.edu/home/>



Login

About Ares
Advisor Services
Budget Office
Dept. of Business Services
Data Administration
Effort Reporting
Electronic Forms
Environmental Safety
Faculty Services
Financial Records System
Interface Reconciliation System
Kuali Financial System (KFS)
Payroll and Human Resources
Personal Services
Procurement
SIS Reports
Student Award System
UM3270
PHR Service Office & Registrar
Reports
Logout


Quick Links

- [PHR Time Entry/Faculty Leave](#)
- [Change email address](#)
- [UMEG-Electronic Grades and Rosters](#)
- [Outside Professional Activity \(OPA\) Report](#)
- [FrsWeb](#)
- [ProWeb](#)
- [eTerp System](#)
- [Confluence Wiki](#)

Safety Training

<https://essr.umd.edu/>

UNIVERSITY OF MARYLAND

 DEPARTMENT OF ENVIRONMENTAL SAFETY, SUSTAINABILITY & RISK

FIRE MARSHAL | ENVIRONMENTAL AFFAIRS | RISK MANAGEMENT | RESEARCH SAFETY | SUSTAINABILITY

REPORT MOLD

Forms | Documents | **Training**

ANNOUNCEMENTS

Heat Safety in the Workplace

LEARN MORE ▶

Search our site by keyword...

	80	82	84	86	88	90	92	94	96	98	100	102	104
40	80	81	83	85	88	91	94	97	101	105	109	114	119
45	80	82	84	87	89	93	96	100	104	109	114	119	124
50	81	83	85	88	91	95	99	103	108	113	118	124	131
55	81	84	86	89	93	97	101	106	112	117	124	130	137
60	82	84	88	91	95	100	105	110	116	123	129	137	
65	82	85	89	93	98	103	108	114	121	128	136		
70	83	86	90	95	100	105	112	119	126	134			
75	84	88	92	97	103	109	116	124	132				
80	84	89	94	100	106	113	121	129					
85	85	90	96	102	110	117	126	135					
90	86	91	98	105	113	122	131						
95	86	93	100	108	117	127							
100	87	95	103	112	121	132							

Likelihood of Heat Disorders with Prolonged Exposure or Strenuous

Caution | Extreme Caution | Danger

ASSISTANCE: Report an Emergency | Report a Spill | Staff Directory

LOG IN FOR: Intranet | Compliance Officers | Supervisors

Scientific Tools Resource-UMD IT

<https://it.umd.edu/terrarin-tech>



Shop for the latest Apple and Dell products and take advantage of exclusive educational discounts. From computers and tablets to accessories, our staff will work with you to find the technology that best suits your needs. We also offer extended service plans and extra benefits for customers, like on-campus support and loaner laptops to use when a computer needs to be repaired. Select models are displayed in-store, stop by to check them out!

[Shop Online](#)



Download software through **TERPware** -- many packages are available at no cost for University of Maryland, College Park students, faculty, and staff. Popular products like Microsoft Office, Adobe Creative Cloud, and more are available for institutional, work-at-home, and personal use. Do it yourself online or let our technicians assist you with installing and configuring your software.



Certified techs are on hand to assist you with your computer problems. Our experts can assist you with software installations, data backups, virus removals, and more. Terrarin Tech is also an authorized service provider for Apple and Dell, and can perform warranty repairs for those products. Terrarin Tech's services are only available to current faculty, staff, students, and affiliates of the University of Maryland, College Park. We are unable to offer support to other visitors.



Software

Academic Resources

Analysis & Modeling

Design & Production

Development Tools

Multimedia

Network

Office Tools

Operating Systems

Security

Servers

Utilities

Web & Email

<https://terpware.umd.edu/>

Scientific Tools Resource-Virtual Computer Lab

<https://eit.umd.edu/labs/software>

[Home](#) | [FACILITIES & COMPUTING TECHNOLOGY](#) | [Computer Labs](#)

Software In EIT Labs

- ANSYS 19.2
- ArcGIS10.7
- AspenTech
- Autodesk Inventor 2019
- Cadence Pspice v17.2
- Comsol 5.3
- Creo Parametric 5
- Cygwin
- EES
- FEHT
- Firefox
- Google Chrome
- Kumo
- Matlab R2019a
- MS Office 2016
- MS Visual Studio 2015
- Minitab 18
- Notepad++
- Origin 8
- PuTTY
- Siemens NX 12
- Solidworks 2018
- VLC
- WinSCP
- Xming

Virtual Computer Lab Software

Most computer lab programs are also available in the [Virtual Computer Lab](#) (VCL), which hosts applications online so that you can access them from any computer without having to download.

See our [Virtual Computer Lab Software List](#) for a list of software included in the VCL.

Lab Software Request

Faculty Only: If the software you require is not listed above, you may fill out our [Lab Software Request](#) form.

Stamp Student Union/health center/recreational center

- Stamp Student Union
 - Bookstore
 - UPS Store
 - Food Store
 - Meeting Room
 - Graduate Student Lounge
- Health Center
 - <https://health.umd.edu/>
- Recreational Center
 - <https://recwell.umd.edu/>

Off-Campus Mask Distribution-1

Method 1

If you live in:

- The Varsity
- University Club
- Terrapin Row
- Landmark
- Domain College Park
- Alloy by Alta
- University View
- The Enclave
- Mazza Grandmarc
- Graduate Hills and Gardens
- Parkside at College Park

Just present your UMD ID card, a copy of this email, or your UID for pickup beginning Aug. 19.

Off-Campus Mask Distribution-2

Method 2

If you live somewhere else or were unable to get your masks at your off-campus housing location, you can pick up your masks Sept. 14 and 15 between 9 a.m. and 3 p.m. at the tent outside of the following locations:

- Physical Sciences Complex
- Tawes Plaza
- Xfinity Center

You will receive an email on Sept. 7 that will include a barcode to claim your masks. Students can also pick up masks on behalf of others. Just be sure to have the unique barcode e-mail for each individual at the time of pickup. Be sure to wear a face covering and stay 6 feet from others.

Off-Campus Mask Distribution-3

Method 3

Masks will also be available for pickup Sept. 16–25 at the following locations during their business hours:

- [Turner Hall Conferences & Visitor Services Welcome Desk](#)
- [Stamp Student Union Information Desk](#)
- [Eppley Recreation Center Membership Services Desk](#)

As a reminder, all students must have a COVID–19 test before and after arriving on campus. Please review the [UMD COVID–19 Student Testing Information](#). If you have any questions regarding face mask distribution, please email Malia Witherspoon at [withersp@umd.edu](mailto:wITHERSP@UMD.EDU).

Sincerely,

Malia Witherspoon
Assistant Director of Hospitality
Chair, Off–Campus Face Mask Distribution Workgroup
Conferences & Visitor Services

Explore DC area

- City Pass
- Six Flags
- Regal Movie Theater
- Dining: <http://dining.umd.edu/>

Slide Download

<https://msg.umd.edu/news/>

Online Welcome Session Slides